



Safeguarding Policy (Pre-16 Learners)

Document version control

Document title:	Educ8 Group Safeguarding Policy Pre-16 Learners
Document status:	Final
Version number:	1
Date:	19/05/2026
Author:	Safeguarding Lead
Approved by:	Board
Review date:	May 2027

Educ8 Safeguarding Policy (Pre-16 Learners)

Contents:

Section	Section Title	Page
1	Purpose	3
2	Scope of Policy	3
3	Educ8 Safeguarding Contacts	3
4	Reporting Concerns	4
5	Monitoring and Review	5
6	Conflict of interest	5
APPENDICIES		
1.	Useful Contacts	6

Educ8 Safeguarding Policy (Pre-16 Learners)

1. Purpose

The purpose of this policy is to provide direction and instruction to the Educ8 Group ('Educ8') consisting of Educ8 Training, ISA Training, Aspire 2Be and its sub-contractors on the identification and management of safeguarding in relation to all business activities that engage pre-16 learners.

This Policy must be read in conjunction with the relevant Educ8 Safeguarding Handbook.

The handbook and process should also be read with consideration of Educ8's:

- Prevent Policy
- Equality, Diversity & Inclusion Policy and Procedure
- Health and Safety Policy and Procedure
- Safer Recruitment Policy
- Complaints Policy and Procedure
- Whistleblowing Policy and Procedure
- Teaching, Learning & Assessment Strategy
- Anti-bullying and Harassment Policy
- Freedom of Speech & Expression Policy
- Acceptable use of ILT and e-safety Policy
- Educ8 GDPR and Data Protection Policy
- Anti-Racist Action Plan 2024-25

2. Scope

This handbook covers all organisational activities of Educ8 and its sub-contractors. This policy applies to all managers, staff, learners, employers, associates and sub-contractors of Educ8 whilst indirectly providing direction and awareness to the wider community and partner organisations. Through the development and implementation of this policy, the Board can be assured that the organisation is adhering to the organisation's commitment to safeguarding children and young people.

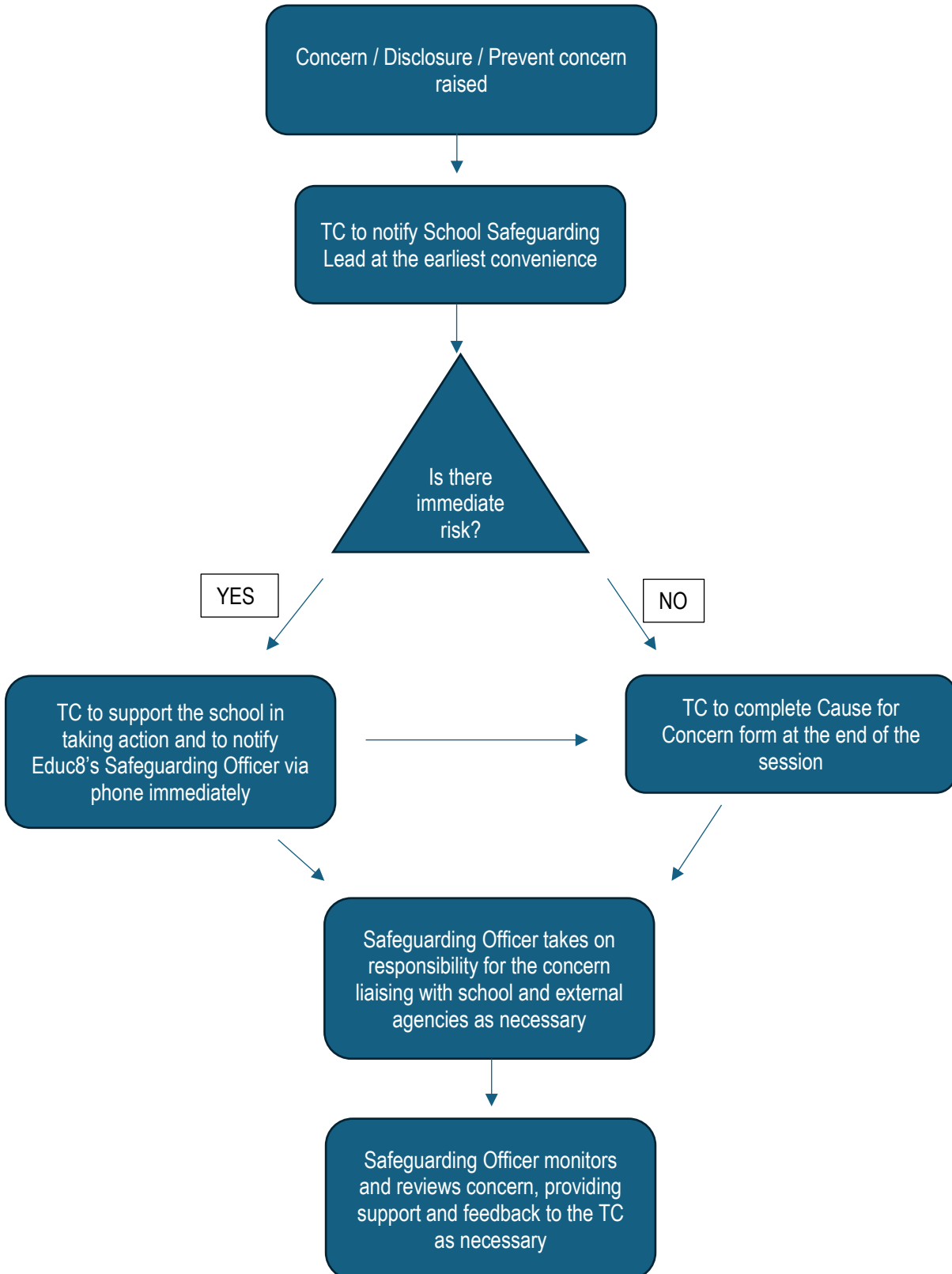
3. Educ8 Safeguarding Contacts

Educ8 Training Group	Designated Safeguarding Officer	Lorraine John	LorraineJ@educ8training.co.uk	07745 647524
	Deputy	Emma Mccutcheon	emmam@Educ8training.co.uk	07769 537474
	Deputy	Sam Azzopardi	samg@isatraining.co.uk	07766 004213
	Safeguarding concerns: 01443 749027		handsupforhelp@educ8training.co.uk	

4. Reporting concerns

The following reporting process should be completed by all Educ8 staff working within mainstream schools, providing training to pre-16 learners.

It is **VITAL** that prior to the delivery of the program, Training Coaches (TC's) are aware of the school Safeguarding Lead and contact details as identified in the Service Level Agreement. These details should also be made available to Educ8's Designated Safeguarding Lead prior to program commencement.



5. Monitoring and review

The monitoring of safeguarding concerns will be managed by the Safeguarding Officer once the initial concern has been raised.

The designated school safeguarding contact should provide a full debrief on action taken by the school in relation to the concern raised. If the Safeguarding officer or TC feels the concern has not been appropriately addressed, then they have the responsibility to take action.

6. Conflict of Interest

Where the TC believes the school may be in a position of conflict of interest, i.e a learner has raised concerns about a school staff member or the school safeguarding lead, the TC should refer the concern straight to Educ8's Safeguarding Officer, bypassing the school communication. The Safeguarding Lead will then take appropriate action that may include, but won't be limited to, contact the Headteacher or Chair of Governors.

Appendix 1 -USEFUL CONTACTS

Wales Local Authority Contact Information

Blaenau Gwent	
Social Services –	01495 315700 info@blaenau-gwent.gov.uk Dutyteam@blaenau-gwent.gcsx.gov.uk
Social Services Out of Hours Emergencies –	0800 3284432
LSCB -	01495 355584/354630 Bill.diamond@blaneaugwent.gov.uk Safeguarding Children Board Heart of Wales Children's Centre Old Blaina Infant School High Street Blaina Blaenau Gwent NP13 3BN
Blaenau Gwent Police -	01633 838111
Bridgend	
Social Services –	01656 642279 firstcontactteam@bridgend.gov.uk
Caerphilly	
Child Social Services -	0808 1001727
Out of Hours Emergencies –	South East Wales 0800 3284432
LSCB -	0808 1001727 Zarah Newman SCB Co-ordinator 01443 864798 newmanz@caerphilly.gov.uk Unit 3 Foxes Lane Oakdale Business Park Oakdale Blackwood NP12 4AB
Cardiff	
Social Services	
Adults -	029 20536444 ascontactteam@cardiff.gov.uk Social Care PO Box 97 Cardiff CF11 1BP

Emergencies –	02920 788570
Children’s Access Point –	029 20536490
Emergencies –	029 20788570
LSCB -	02920 632816/029 20642800 lscb@cardiff.gov.uk
Carmarthenshire	
Social Services	
Adults -	Careline+ 01267 224466 Careline+ Emergency Out of Hours 01558 824283
Children –	Social Services Assessment Team Llanelli 01554 742322 Carmarthen 01267 224417
Out of Hours Emergencies –	01558 824283
LSCB -	01267 246544
Dyfed Powys Police -	0845 330 2000
Ceredigion	
Social Services -	01545 574000 Contact-socservs@ceredigion.gov.uk
LSCB	
Out of Hours Emergencies -	0845 6015392
Dyfed Powys Police -	0845 3302000
Merthyr	
Social Services	
Adults –	Duty Officer 01685 725000 adultintakeservices@merthyr.gov.uk Community Services Directorate 24 Keir Hardie Health Park Aberdare Road Merthyr Tydfil CF48 1BZ
Children –	Duty Officer 01685 742506 Merthyr Tydfil CBC Social Services Taf Fechan Building Castle Street Merthyr Tydfil CF47 5BG
Monmouthshire	
Social Services -	01291 635669
South East Wales Emergency Duty Team -	0800 3284432
LSCB –	Duty Social Worker - 01291 635669
Neath Port Talbot	

Social Services	
Adults –	01639 686802
Children –	01639 686803
Emergency Duty Team –	01639 895 455
LSCB -	Delyth Berni Child Protection Co-ordinator 01639 763319 d.berni@npt.gov.uk
Newport	
Social Services -	info@newport.gov.uk 01633 656656 – Call Centre
Pembrokeshire	
Social Services	
Adults –	Community Care Services Contact Centre – 01437 764551
Children -	Child Care Assessment Team 01437 776322 or 01437 776325 CCAT@pembrokeshire.gov.uk
Social Care Out of Hours Emergencies -	08708 509508
Police -	0845 3302000
Powys	
Social Services	
Adults -	Powys has a number of local offices, the details of which can be found on the council website for the correct adult services office to contact.
Children –	There are contact details for the various local offices on the council's website
Out of Hours Emergencies -	0845 7573818
Rhondda Cynon Taff	
Social Services -	01443 425003 socialservices@rctcbc.gov.uk
Swansea	
Social Services	
Adults –	01792 636854 pova@swansea.gov.uk
Children –	01792 635700 Access.information@swansea.gov.uk
Emergency Out of Hours –	01792 775501 edt@swansea.gov.uk
LSCB -	01792 637543 The Chair of the Swansea Safeguarding Children Board Child and Family Services City and County of Swansea 3 rd Floor Oldway Centre 36 Orchard Street Swansea SA1 5LD

Vale of Glamorgan	
Social Services -	01446 700111 C1v@valeofglamorgan.gov.uk
Children and Family Support	01446 725202
Out of Hours Emergency Duty Team	029 20788570